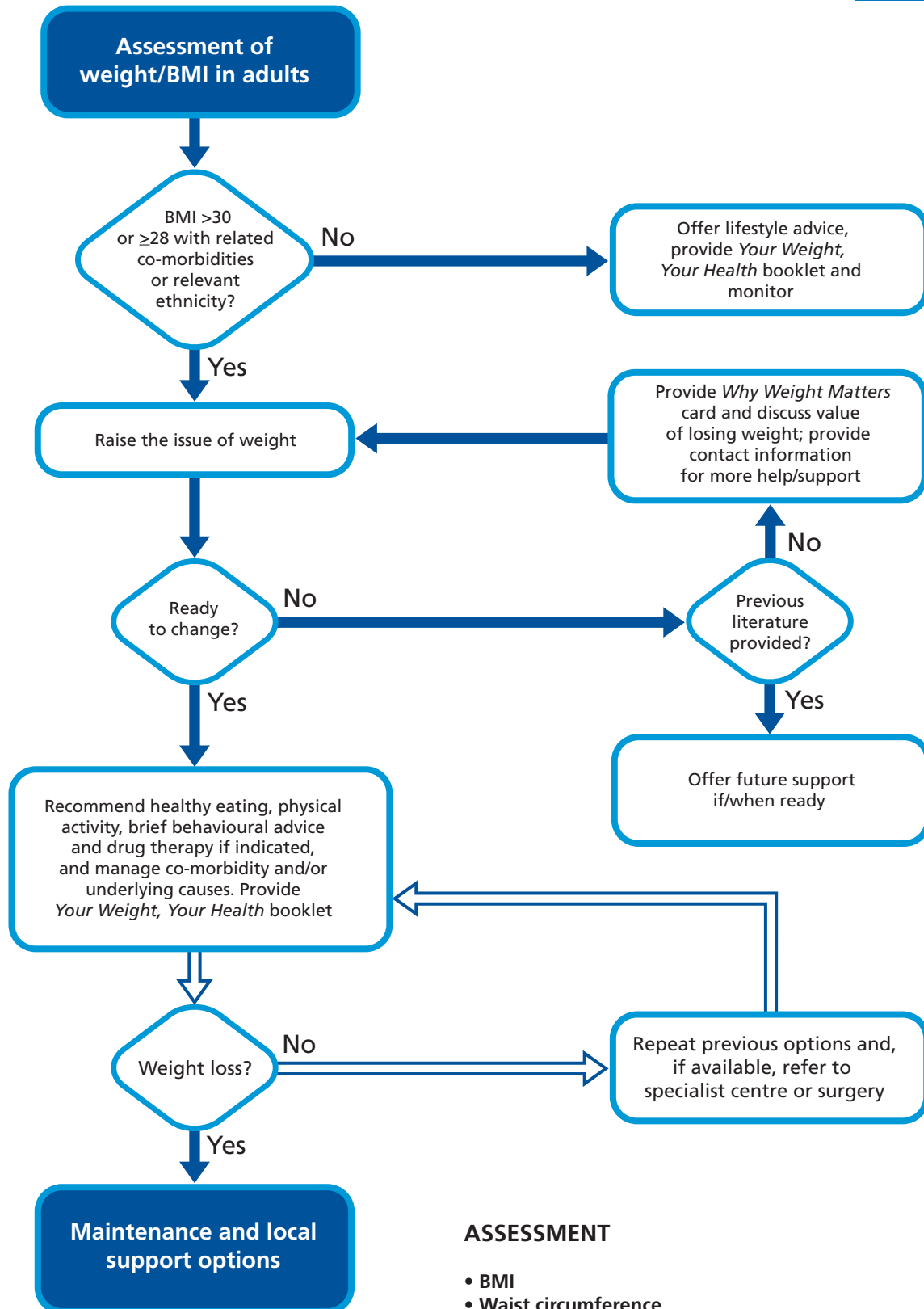


# Adult Care Pathway (Primary Care)



## ASSESSMENT

- BMI
- Waist circumference
- Eating and physical activity
- Emotional/psychological issues
- Social history (including alcohol and smoking)
- Family history  
eg diabetes, coronary heart disease (CHD)
- Underlying cause  
eg hypothyroidism, Cushing's syndrome
- Associated co-morbidity  
eg diabetes, CHD, sleep apnoea, osteoarthritis, gallstones, benign intracranial hypertension, polycystic ovary syndrome, non-alcoholic steato-hepatitis

