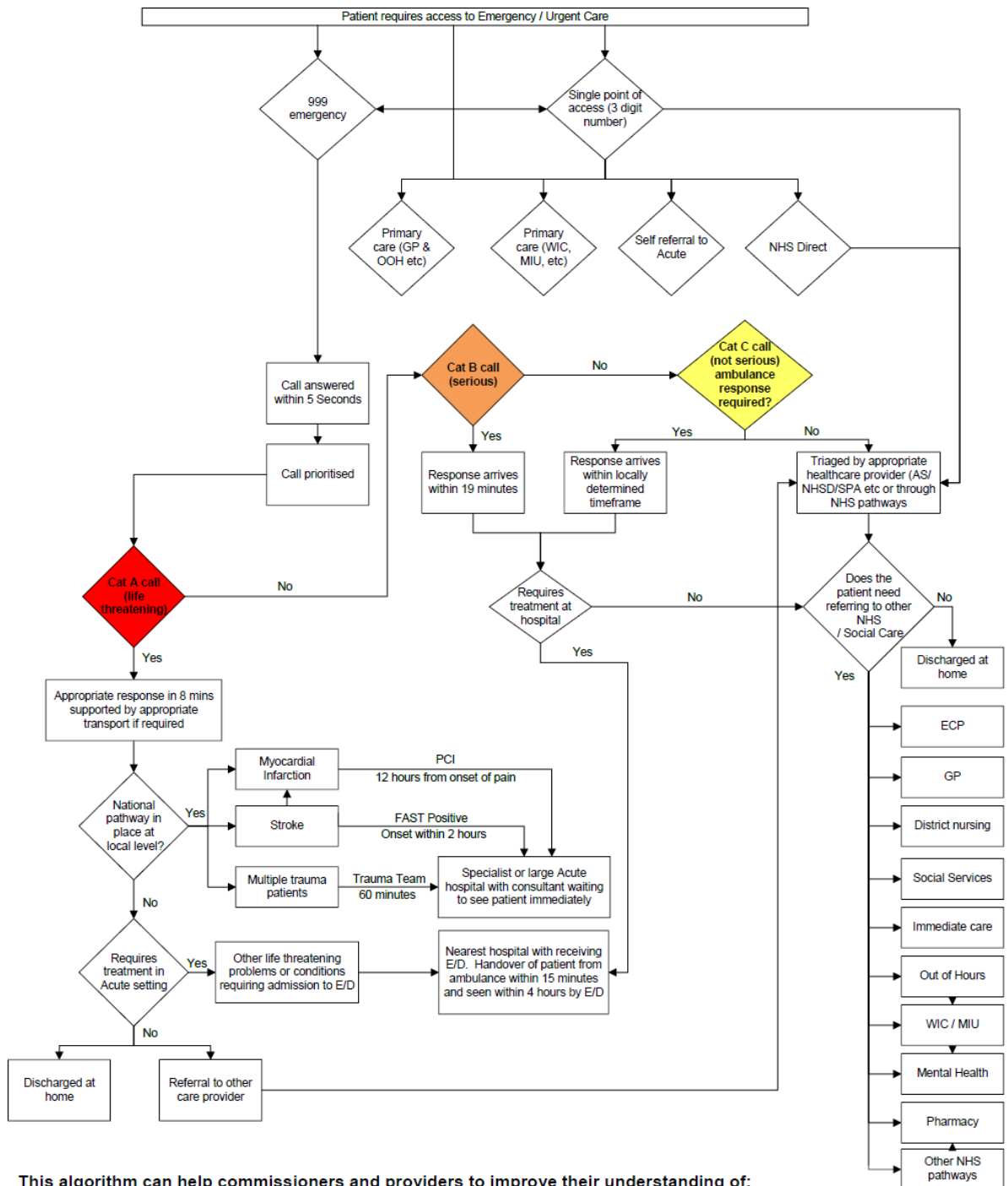


Emergency Services Review: Emergency Access Algorithm



Interim Management and Support

EMERGENCY CARE ALGORITHM



This algorithm can help commissioners and providers to improve their understanding of:

- access pathways into Emergency Care Systems; and
- potential solutions to improve emergency care access and reduce delays across the whole health and social care system.

The algorithm provides easily identifiable pathways, with national target times. It can help users to:

- pinpoint where delays in the system occur
- identify alternatives to areas of access that are under pressure
- support high performance by providing both Commissioners and Providers with a holistic view of the whole emergency / urgent access system.

The algorithm can be used as a visual aid to help thinking or in conjunction with the Good Practice guidelines produced by the Emergency Services Review.